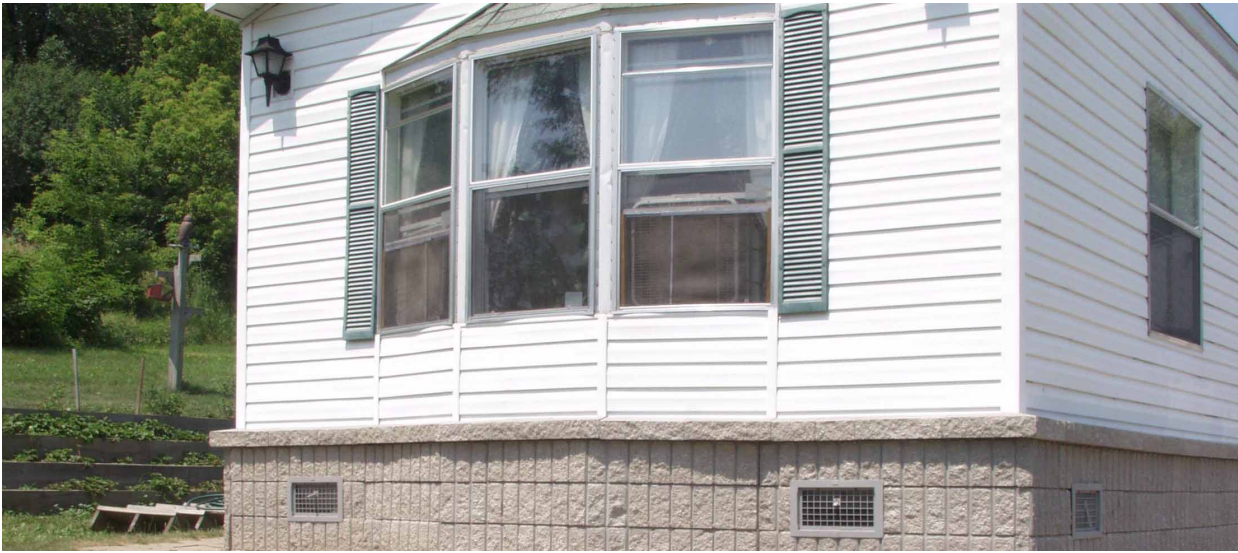


This Construction Bulletin is one in a series of informational papers in which we will be providing application ideas and "how-to" tips for StoneSkirt™ - the ultimate skirting. As with any project, carefully read all installation guidelines before proceeding with your StoneSkirt™ application. Observe safety precautions.

## The StoneSkirt™ Sill



Putting the finishing touch on your manufactured home's skirting is quick and easy with the StoneSkirt Sill unit. Resembling the appearance of a traditional stone sill, the StoneSkirt Sill unit sits atop your skirting wall with a specially designed Sill Bracket allowing for possible frost heave

or other movement. Beyond what is available with traditional steel or vinyl flashings, the StoneSkirt Sill unit provides a polished look to your skirting application.

The StoneSkirt Sill units are split faced and colored to match the appearance of your StoneSkirt skirting application.

The StoneSkirt Sill unit can be easily cut to allow for both inside and outside corners.



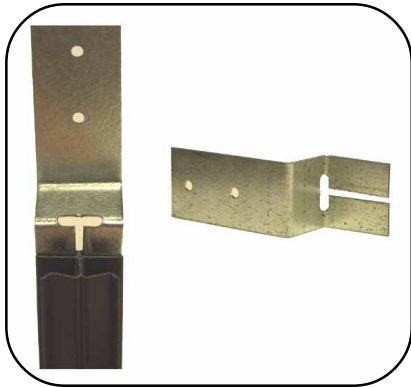
### Specifications\*:

Size (L-Shaped).....	4"H x 16"W x 4.5"D
Weight.....	18 lbs.
Area.....	0.444 Sq.ft.
Absorption.....	6% maximum
Compressive Strength.....	4,500 PSI minimum
Face Options.....	Split

- ATTRACTIVE
- DURABLE
- VERSATILE
- EASY TO INSTALL
- COST EFFECTIVE



# Installation Instructions



## Step 1. Assemble the Sill Bracket to the I-Beam

When using the StoneSkirt Sill Unit, a Sill Bracket should be fastened to each StoneSkirt I-Beam, after column assembly. Slide the Sill Bracket, over the connector on the back of the StoneSkirt I-Beam.



## Step 2. Connect Sill Bracket to the Home

Install the I-Beam to the top of the last StoneSkirt unit on your column. Attach the Sill Bracket approximately 2" down from the top of the I-Beam. The Sill Bracket enables the column to move up and down, allowing for possible frost heave or other movement. Fasten the Sill Bracket to the outside wall of the home.



## Step 3. Stack Units

Apply a 1/4" bead of Super-Stik™ Concrete Adhesive to the top of your StoneSkirt units. The Sill will sit on this bead of adhesive to form a bond with the units below. Surfaces to be bonded must be free of dust and dirt. Press the sill firmly in place and allow 24 hours (in warm weather) for maximum adhesive. Super-Stik™ Concrete Adhesive is a superior grade, weather-proof, co-polymer adhesive to use when adhering StoneSkirt units.

# STONE SKIRT™

**"The Ultimate Skirting"**

A Division of Alliance Concrete Concepts, Inc.  
325 Alliance Place NE • Rochester, MN 55906  
(507) 536-4515 • (877) 248-7456 • Fax (507) 529-2879  
[www.stoneskirt.com](http://www.stoneskirt.com)

Distributed By: